



THE BLUE KIT

No. D10568-103



CF – Quick Installation Guide

IPDS Emulation
Mainframe & AS/400 to LAN printer
for Hewlett Packard Printers

Accredited Solutions
Business Partner



This Quick Guide explains how to install the Blue Kit

Prerequisite to Install the Blue Kit in the printer

Before the first installation of the Blue Kit, print a self-test to make sure that your printer has enough memory and the minimum printer firmware Datecode.

- Memory Requirements

Printer	Minimum Printer memory
LJ 2410 / LJ 2420 / LJ 2430	48 MB resident.
LJ 4240 / LJ4250 / LJ 4350	64 MB resident
LJ 4345mfp	256 MB resident
Color LJ 4650	160 MB resident
Color LJ 4700	160 MB resident
Color LJ 4730mfp	256 MB resident
Color LJ CM 4730mfp	256 MB resident
Color LJ 5550	160 MB resident
LJ 9040 / LJ 9050	128 MB resident
LJ 9040mfp / LJ 9050mfp	256 MB resident
Color LJ 9500mfp	512 MB resident
Color LJ 4650, 4700, 4730mfp, M4730mfp, 5550, 9500mfp	Blue Kit with FULL Color support (512 MB)

- Firmware Requirements

Printer	Minimum Printer firmware date code
LJ 2410 / LJ 2420 / LJ 2430	20040625 08.002.0
LJ 4240 / LJ4250 / LJ 4350	20040625 08.002.0
LJ 4345mfp	20040920 09.004.0
Color LJ 4650	20040115 07.000.0
Color LJ 4700	20050513 46.026.0
Color LJ 4730mfp	20050613 46.032.0
Color LJ CM 4730mfp	2008xxxx 48.026.0
Color LJ 5550	20040115 07.000.0
LJ 9040 / LJ 9050	20040603 08.001.0
LJ 9040mfp / LJ 9050mfp	20040920 08.004.0
Color LJ 9500mfp	20040920 08.004.0

Blue Kit Installation

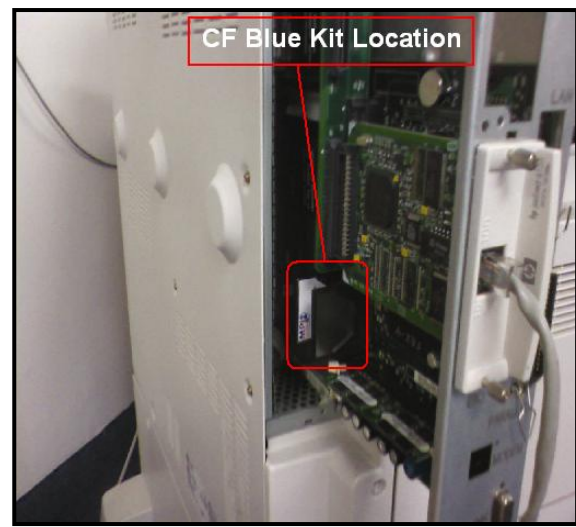
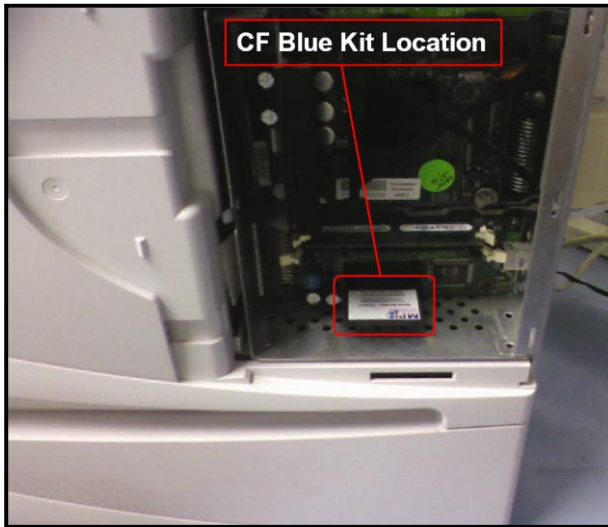
The Blue Kit will be installed on the printer formatter, inside the printer.

Examples shown are the HP LaserJet:

4350

and

9050, others may vary.



**** Warning ****

**** Before a Disk Initialization (DISK_INIT) procedure, please remove the Blue Kit.
** Before Upgrading Firmware on the printer, please remove the Blue Kit.**

1. Make sure no power cord is connected to the printer.
2. Locate the CompactFlash card slot on the printer by removing the panel on the printer, usually located on the side of the printer.
3. Insert the Blue Kit into the printer's CompactFlash card slot. The Blue Kit will only slide in one way, be careful not to be bend the pins on the printer's CompactFlash card slot.
4. Replace the printer's side panel and power on the printer.
5. Print the **configuration page** and check that the **MPIPDS** personality appears in the list.

The following is an extract of a configuration page:

Installed Personalities and Options

PCLXL ((2001xxxx)
PCL (2001xxxx)
XHTML (700)
PS (2001xxxx)
MPIPDS (20080730)
DIMM Slot 1: Empty
DIMM Slot 2: 256 MB DDR
Card Slot 1: SMART ATA FLASH DISK : 1MB
Card Slot 2: CF CARD 1GB: 951 MB *
Card Slot 3: EMPTY
EIO 1: HP JetDirect J6057A
EIO 2: HP Scanner Processor Card
Internal Disk: HP J7948A: 18 GB

* (or higher size)

6. You are now ready to print.

HP settings

Default IPDS port in JetDirect card is : **9100**

This IP port number is used for printer Host device configuration.

- Set the IP, Subnet Mask, and Gateway address on the Embedded or JetDirect card.
- **IDLE TIMEOUT** on the **JetDirect** card. This parameter must be set to **0** (zero), JetDirect cards not having a **0** (zero) value option you can set to 3600.
- **I/O Timeout** on the **I/O Menu** of the **HP printer**. The default value is 15. This parameter must be set to **90**.
- **PERSONALITY** on the Configuration Menu of the **HP printer**. This parameter must be set to **AUTO**.

Remember to power cycle printer to enable new settings.

Configuration via Web Browser

Example : <http://192.16.100.10>

Note:

Refer to the **Plug-in AFP/IPDS Emulation** User's Guide for additional details.

About MPI Tech

The MPI Tech Group is a leading manufacturer of printing solutions for IBM systems.

All products are developed and produced by MPI Tech and sold through MPI Tech sales offices or authorized dealers around the world.

MPI Tech partakes in various international committees to further spread its know-how and define the future of digital printing (Members of the "AFP Consortium").

Copyrights:

© Copyright MPI Tech 1981 - 2012. All rights reserved.

All other products mentioned are trademarks of their respective owners.

Web site : www.mpitech.com

France	US (East coast)
MPI Tech SA - Corporate Headquarters 40 rue du Général Malleret Joinville BP 88 94402 Vitry sur Seine France Phone + 33 (0) 1 45 73 09 40 Fax + 33 (0) 1 46 80 70 71 e-mail : support.fr@mpitech.com	MPI Technologies Inc. 2001 Jefferson Davis Highway #Suite 306 Arlington, VA 22202 USA Phone + 1 (703) 418 0680 Fax + 1 (703) 418 0684 e-mail : support.us@mpitech.com
Denmark	US (West coast)
MPI Tech A/S Vadstrupvej 35 Dk – 2880 Bagsværd Denmark Phone + 45 4436 6000 Fax + 45 4436 6111 e-mail : support.dk@mpitech.com	MPI Technologies Inc. 4952 Warner Avenue, Suite 301 Huntington Beach CA 92649-5506 USA Phone + 1 (714) 840 80 77 Fax + 1 (714) 840 21 76 e-mail : techsup@mpitech.com
United Kingdom	Germany
MPI Tech United Anchor House, 50 High Street, Bagshot Surrey GU19 5AW United Kingdom Phone + 44 (0) 844 800 9803 Fax + 44 (0) 1276 452 379 e-mail : support.uk@mpitech.com	MPI Tech GmbH Bavariastr. 7a D-80336 Munich Germany Phone + 49 (0) 89 35 4762 -30 Fax + 49 (0) 89 35 4762-11 e-mail : support.de@mpitech.com