



DocOut Licensing Server Installation and Operator's Guide

D10564-03

September 2011

MPI Tech A/S
Vadstrupvej 35
2880 Bagsvaerd
Denmark
Tel: +45 44 36 60 00
Fax: +45 44 36 61 11
www.mpitech.com

This page intentionally left blank

Table of contents

1	Overview of DocOut Licensing Server	3
1.1	When to install DocOut Licensing Server	3
1.2	Requirements	4
1.2.1	<i>Personal computer requirements</i>	4
2	Installation of Licensing Server	5
2.1	Pre-installation requirements	5
2.2	Installation	5
3	How to configure DocOut for Single Server System	7
3.1	Request your License key	8
3.2	Install the License Key using License Manager	9
4	How to configure DocOut for Multiple Server System	10
4.1	Request your License key	11
4.1.1	<i>Using License Manager</i>	11
4.1.2	<i>Using License Server System</i>	12
4.2	Installing the License Key	13
4.2.1	<i>Install the license key Using License Manager</i>	13
4.2.2	<i>Install the license key using Licensing Server System</i>	14
5	Firewall configuration	16
5.1.1	<i>How to setup the firewall.</i>	16

1 Overview of DocOut Licensing Server

The software PrintServer *DocOut for Windows* and the *Licensing Server* is either downloaded from www.mpitech.com or supplied on a CD, which includes all set-up files and instructions for *DocOut* and *PrintGuide*. The Installation and Operator's Guide is also included on the CD. Please check www.adobe.com for any updates to Acrobat Reader.

Using the *License Server* allows multiple DocOut installations to access and obtain any session and features required on the remote installation. Several remote DocOut installations may this way dynamically share one central license with the total number of printers and features needed for the entire installation.

1.1 When to install DocOut Licensing Server

DocOut is licensed to meet the requirements of the actual installation. A License system is installed for monitoring the usage of the installation.

A License System (*License Manager*) is always included with the basic installation of DocOut (Single Server System) as an integrated part of the DocOut software. Using only one DocOut installation on a single server **does not require** the installation of the *Licensing Server* System.

The License System may also reside on a separate server as a central or separate installation (Multiple Server System) serving multiple DocOut installations. Installing the *Licensing Server* system will allow multiple DocOut installations to connect to the central server herewith allowing a flexible and dynamic sharing of the total license purchased. This option **does require** the installation of the *Licensing Server* system.

PrintGuide is used to discover, monitor and configure MPI Tech print servers, including the software PrintServer **DocOut**. Please note that PrintGuide is required for monitoring, configuring and activating DocOut.

1.2 Requirements

This section describes the hardware and software requirements needed for operating *DocOut Licensing Server*.

1.2.1 Personal computer requirements

Hardware:

- PC with LAN adapter able to run Windows 4.0 (x86) SP6 or higher

Software:

- Windows 2000, Windows XP professional, Windows Server 2003, Windows Vista or Windows Server 2008. See the Windows, System Guide for details.

2 Installation of Licensing Server

2.1 Pre-installation requirements

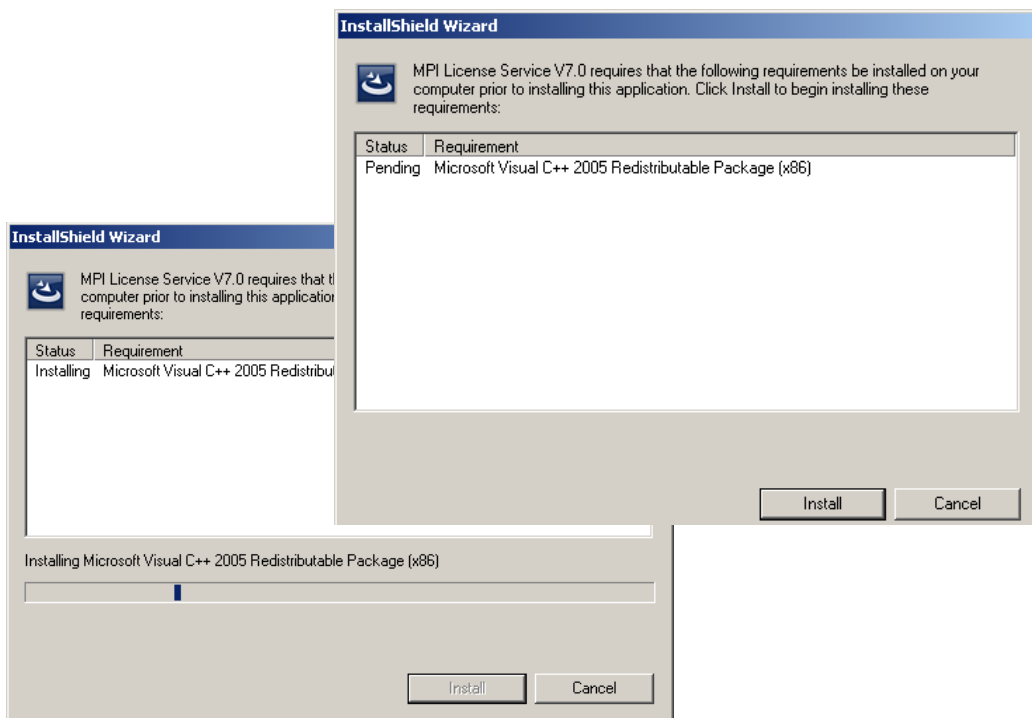
Windows and TCP/IP must be installed on the computer. PCs and Servers must be configured and accessible on the network.

2.2 Installation

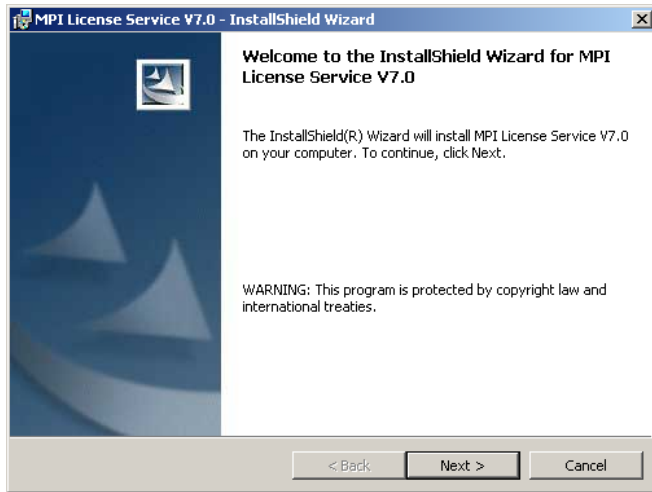
1. Insert the DocOut CD into your CD drive, or run the set-up downloaded from the MPI Tech web site. The installation program screen will be launched. It is not required that DocOut and PrintGuide is installed.

Select 'Install Licensing Server' from the welcome screen and follow the instructions.

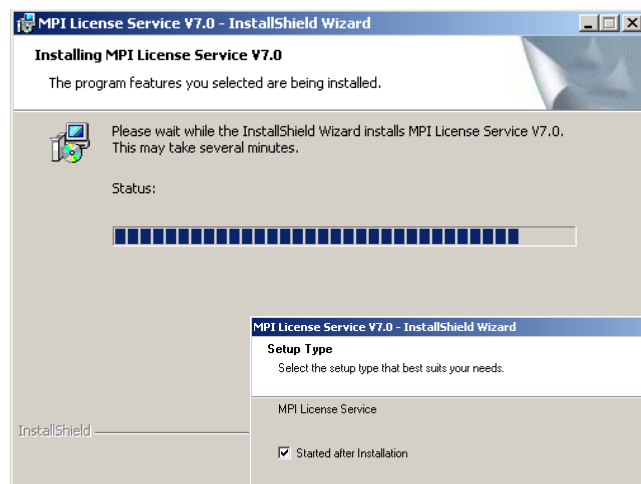
2. The MPI Tech License System requires that Microsoft Visual C++ is installed. If MS Visual C++ is not installed you will be prompted to install this as indicated below:



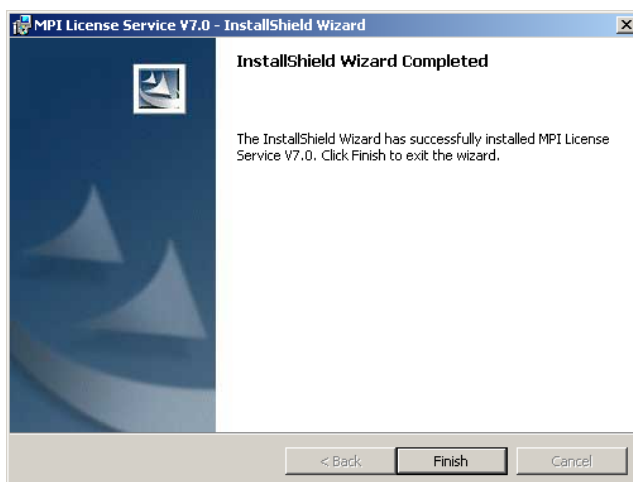
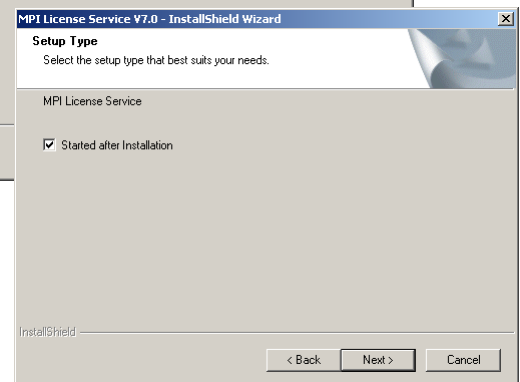
On completion of the installation of MS Visual C++ the installation of the License System will follow automatically:



Follow the instructions and make any changes to the setup if required for your installation.



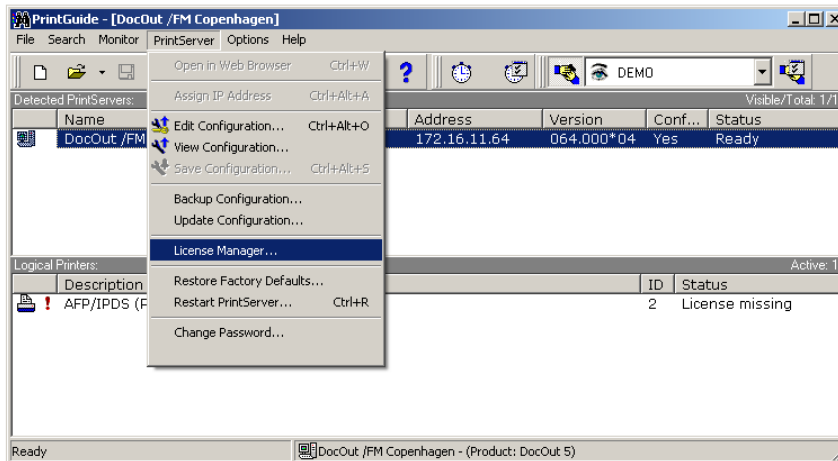
Ensure that 'Started after Installation' is enabled.



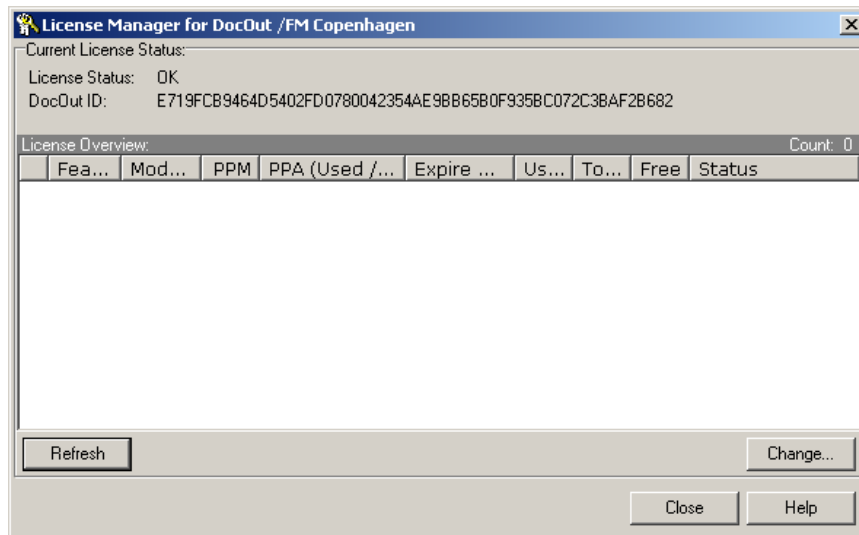
Installation is complete and is now ready for configuration.

3 How to configure DocOut for Single Server System

Start PrintGuide, if it has not been started. On the monitor view, select the DocOut that has been installed.



Now, you can authorize your DocOut installation via PrintGuide. Verify the current status of your DocOut using the License Manager in PrintGuide.



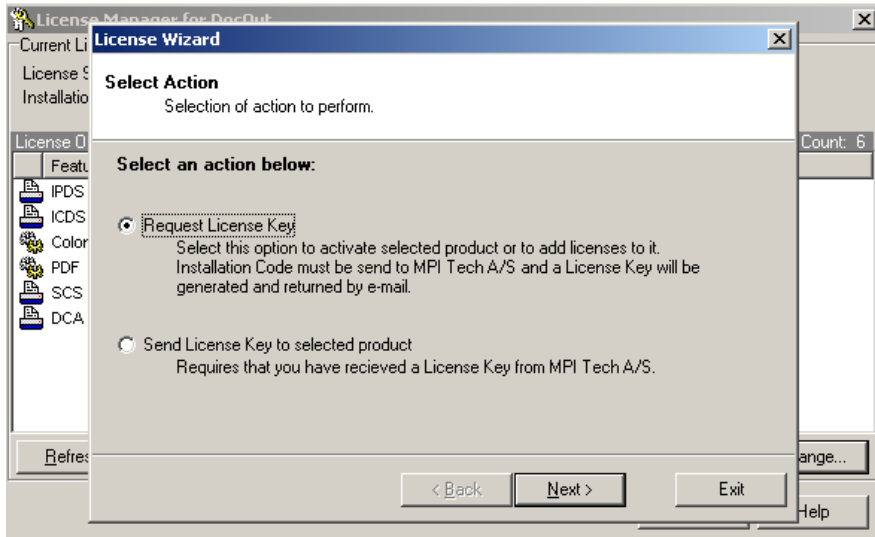
License Manger. Status view.

3.1 Request your License key

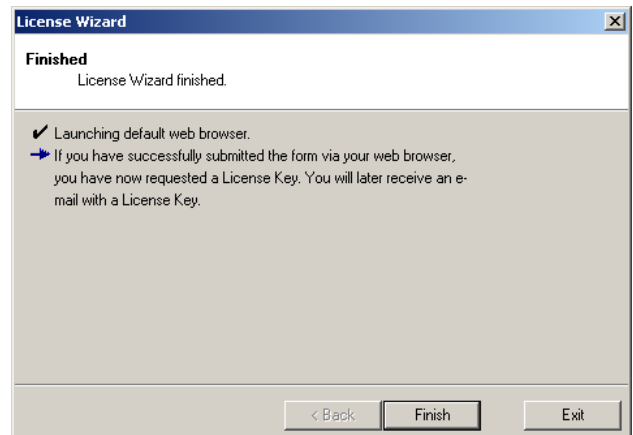
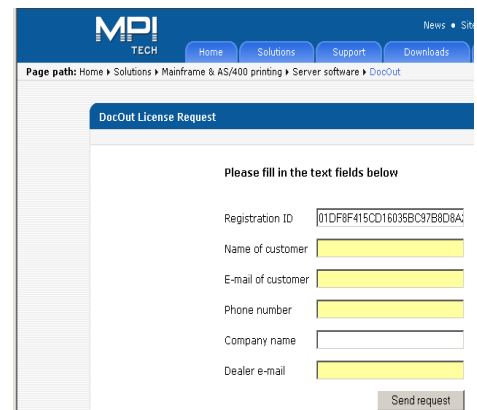
(Single Server System)

Follow the below instructions.

- To request a license key select 'Change'



- Select 'Request License Key' and hit 'Next >' 'Next >'
- A web browser will open with the registration form
- This will automatically obtain the DocOut ID and include this in the registration form
- Fill-in all required information and select 'Send Request'
- The Server-ID and required details will now be forwarded to your MPI Tech office.
- Verify receipt of sending the request and close the web browser.
- Select 'Finish' to end the request.



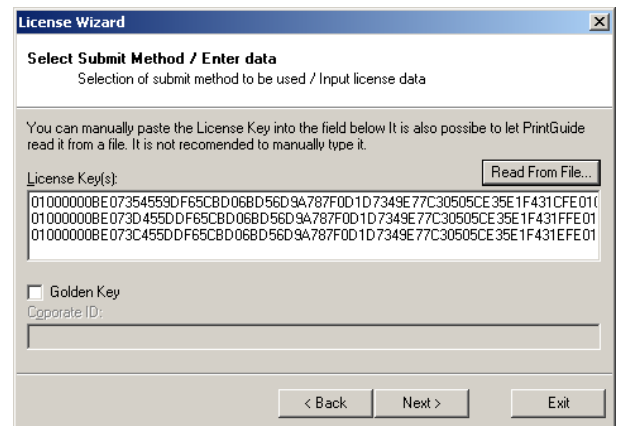
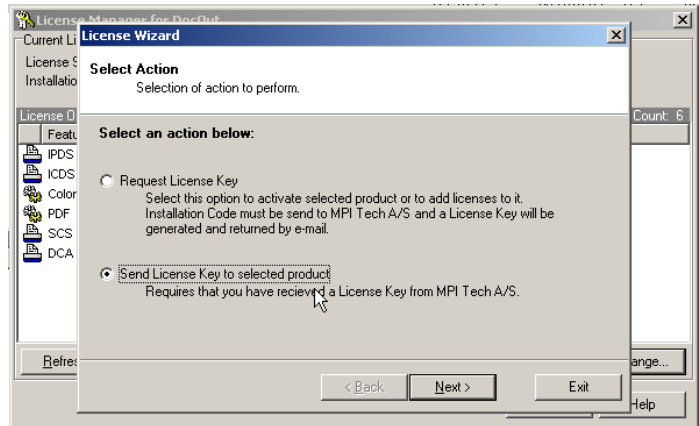
Upon completion of the procedure you will be contacted and receive a license key file with the DocOut options purchased or requested for evaluation. The forwarded key is based upon the options requested via your local dealer or to the MPI Tech sales office.

3.2 Install the License Key using License Manager

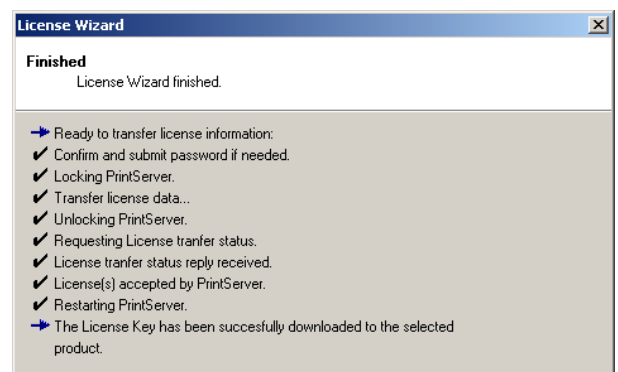
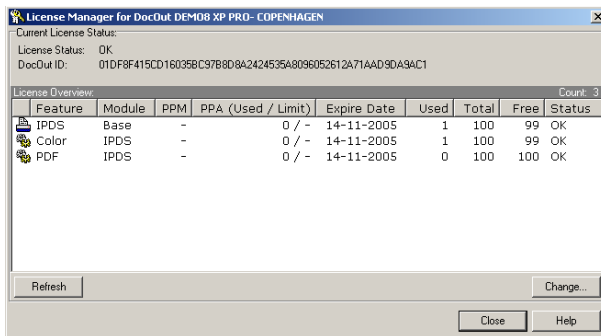
(Single Server System)

After receipt of your license key file please follow the procedure to authorize your DocOut installation.

- Open PrintGuide and select one of the DocOut installations.
- Select 'PrintServer' – 'License Manager' – Change – 'OK'
- Select 'Send License Key to Selected Product' and hit 'Next >'
- Select 'Read from file' and hit 'Next >'
- Locate the supplied license key file and select 'Open'
- Hit 'Next >' and follow the instructions. Leave the 'Golden Key' option **unchecked** unless otherwise instructed.
- 'Restart PrintServer after download' must be checked.
- Verify correct download of the license key



Successful installation of the license can be verified using the 'License Manager'

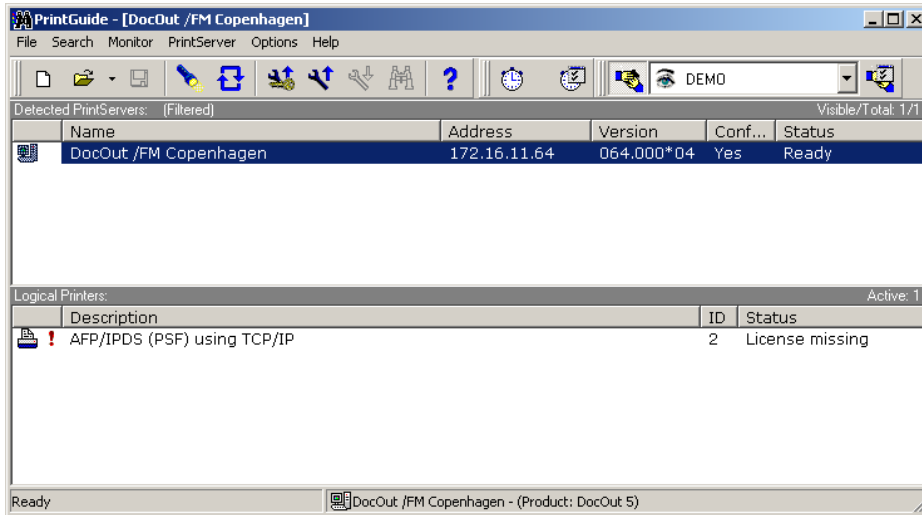


4 How to configure DocOut for Multiple Server System

This applies to DocOut version S80 64.xxx only.

Note: DocOut Licensing Server must be installed (see Section 2.2)

Start PrintGuide, if it has not already been started. On the monitor view, select the DocOut that has been installed.

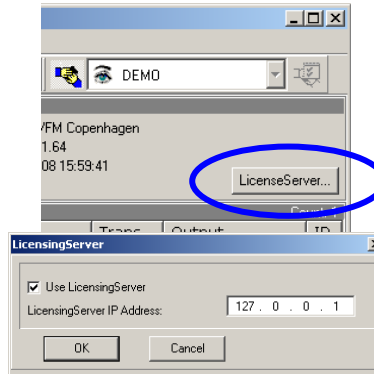


Open up the configuration using 'Double click', or using the 'Edit Configuration' menu.

Select 'LicenseServer...' and enter the IP address of the server system where the MPI Tech License Server is installed.

Ensure that 'Use LicensingServer' is enabled.

Select 'OK'



Repeat the procedure in this chapter for each remote DocOut installation.

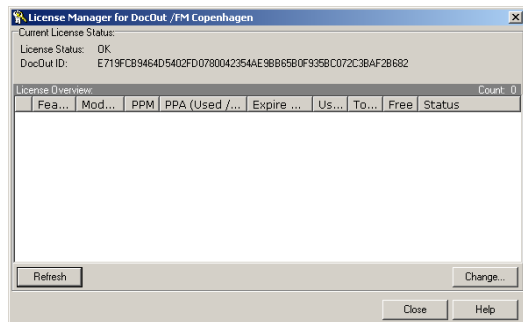


Figure 3, The License Manger. Status view.

4.1 Request your License key

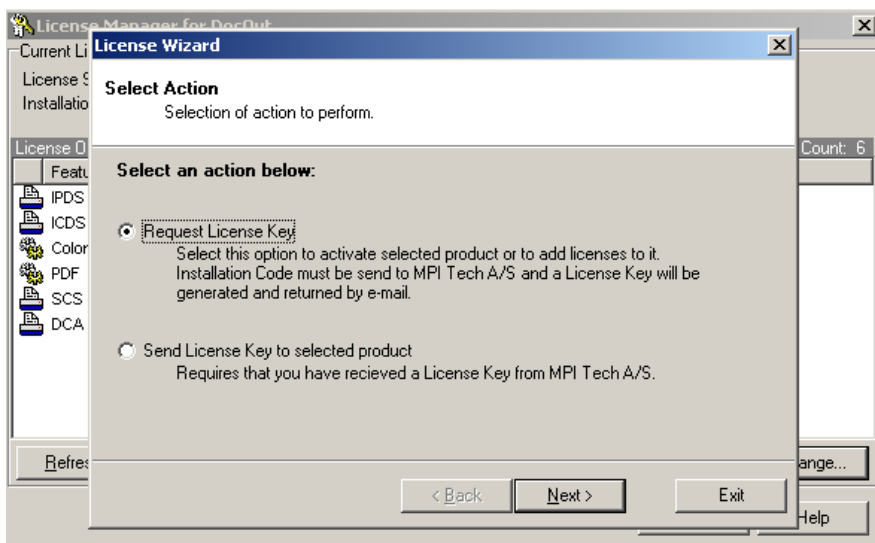
Two methods of requesting the license key are available:

- 1) Using the License Manager (4.1.1)
- 2) Using the License Server System (4.1.2)

4.1.1 Using License Manager

Follow the below instructions.

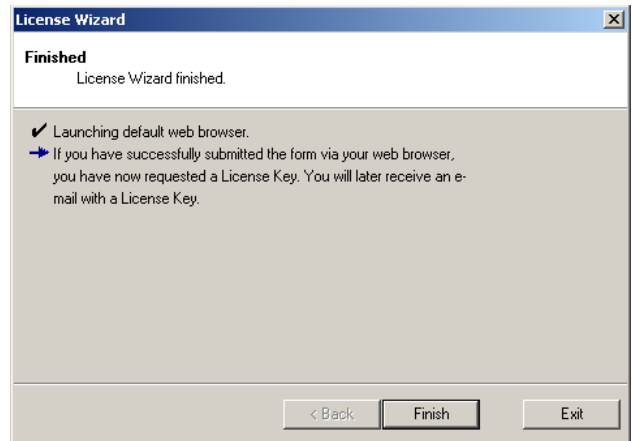
- To request a license key select 'Change'



- Select 'Request License Key' and hit 'Next >' 'Next >'
- A web browser will open with the registration form
- This will automatically obtain the DocOut ID and include this in the registration form
- Fill-in all required information and select 'Send Request'
- The Server-ID and required details will now be forwarded to your MPI Tech office.

- Verify receipt of sending the request and close the web browser.
- Select 'Finish' to end the request.

Upon completion of the procedure you will be contacted and receive a license key file with the DocOut options purchased or requested for evaluation. The forwarded key is based upon the options requested via your local dealer or to the MPI Tech sales office.

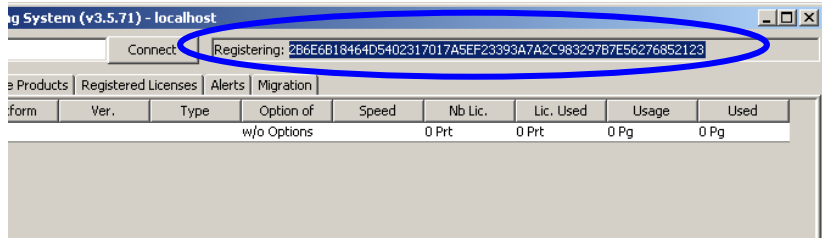


4.1.2 Using License Server System

Follow the below instructions.

- Open the MPI Tech Licensing System:
'Start – All Programs – MPI Tech – MPI Tech License Service – MPI Tech Licensing System'

- Place the cursor on the first number in the 'Registering' number and mark the entire string.



- Use Ctrl C / Ctrl V to copy and paste this number into an Email

Forward this Email to your local MPI Tech contact person.

4.2 Installing the License Key

Two methods of installing the license key are available:

- 1) Using the License Manager (4.2.1)
- 2) Using the License Server System (4.2.2)

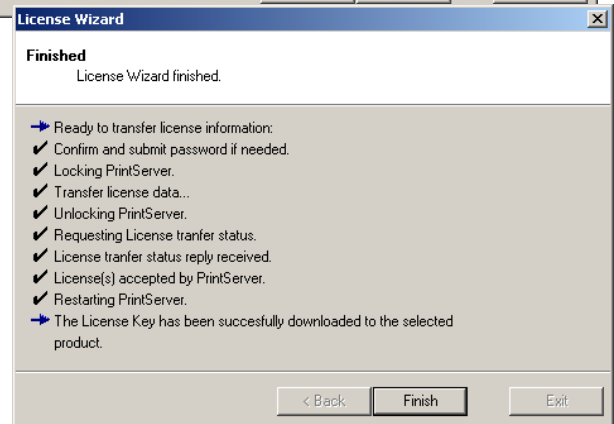
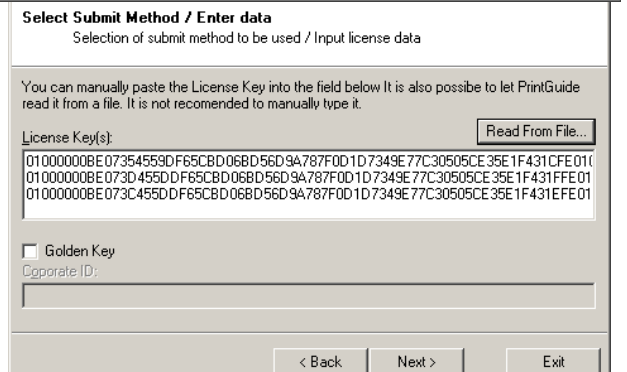
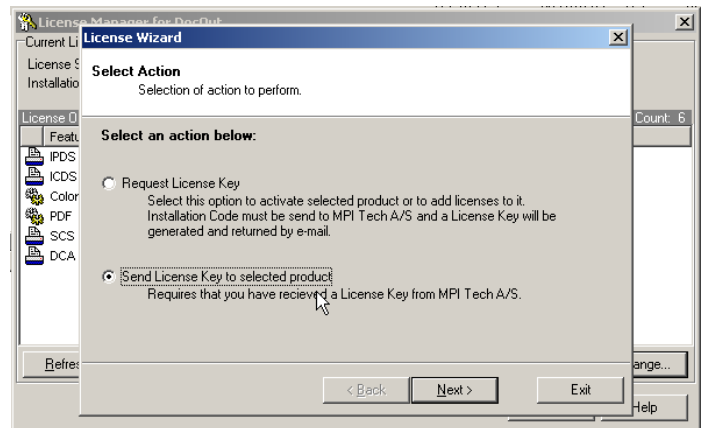
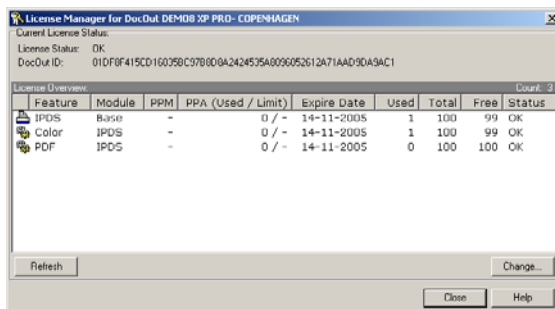
4.2.1 Install the license key Using License Manager

(Multiple Server System)

After receipt of your license key file please follow the procedure to authorize your DocOut installation.

- Open PrintGuide and select any DocOut connected to the Licensing Server.
- Select 'PrintServer' – 'License Manager' – Change – 'OK'
- Select 'Send License Key to Selected Product' and hit 'Next >'
- Select 'Read from file' and hit 'Next >'
- Locate the supplied license key file and select 'Open'
- Hit 'Next >' and follow the instructions. Leave the 'Golden Key' option **unchecked** unless otherwise instructed.
- 'Restart PrintServer after download' must be checked.
- Verify correct download of the license key

Successful installation of the license can be verified using the 'License Manager'

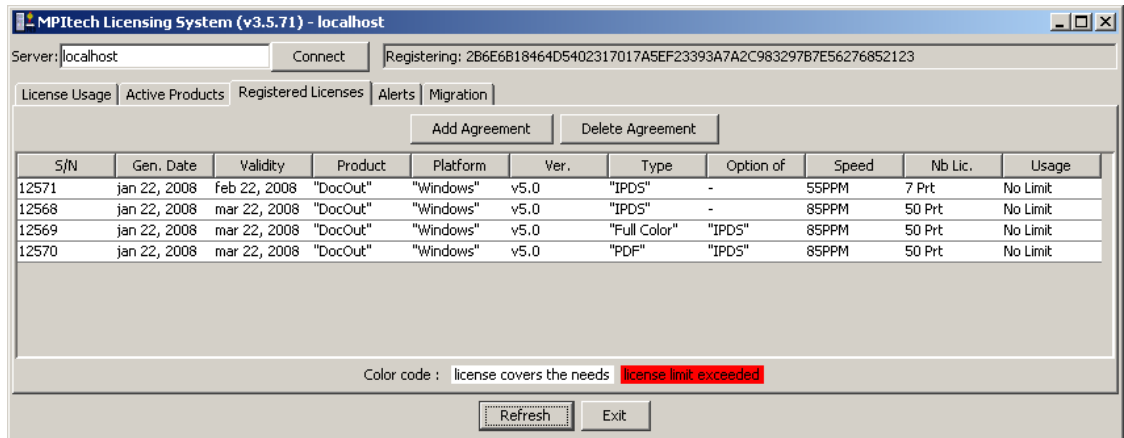
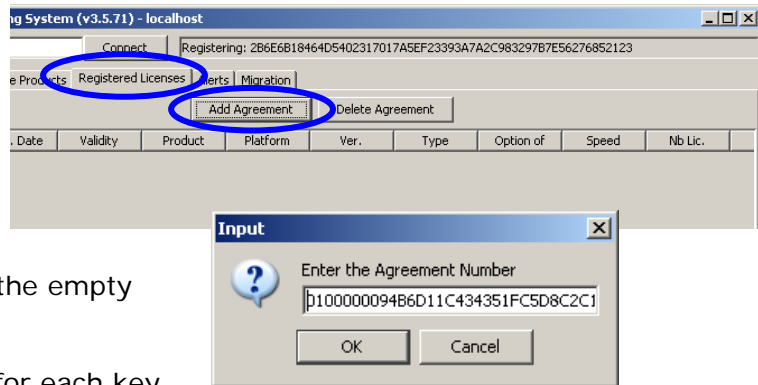


4.2.2 Install the license key using Licensing Server System

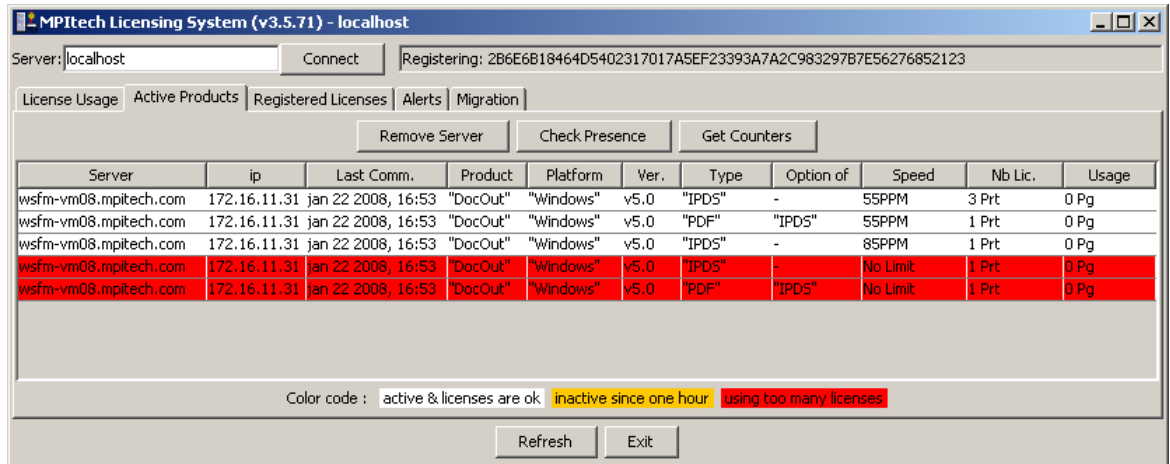
(Multiple Server System)

Follow the below instructions.

- Open the MPI Tech Licensing System:
 'Start – All Programs – MPI Tech – MPI Tech License Service – MPI Tech Licensing System'
- Select tab:
 'Registered Licenses' and open the 'Add Agreement' window.
- Use Ctrl C / Ctrl V to copy and paste the received keys into the empty field and hit 'OK'
- Repeat this procedure for each key received.



- When complete verify the list of requested options.



- Verify correct connection from remote DocOut installations.

The screenshot shows the MPItech Licensing System (v3.5.71) - localhost interface. The window title is "MPItech Licensing System (v3.5.71) - localhost". The server is set to "localhost" and the registration ID is "2B6E6B18464D5402317017A5EF23393A7A2C983297B7E56276852123". The interface has tabs for "License Usage", "Active Products", "Registered Licenses", "Alerts", and "Migration". The "License Usage" tab is active, displaying a table with the following data:

Product	Platform	Ver.	Type	Option of	Speed	Nb Lic.	Lic. Used	Usage	Used
"DocOut"	"Windows"	v5.0	"IPDS"	-	55PPM	7 Prt	3 Prt	No Limit	0 Pg
"DocOut"	"Windows"	v5.0	"IPDS"	-	85PPM	50 Prt	1 Prt	No Limit	0 Pg
"DocOut"	"Windows"	v5.0	"Full Color"	"IPDS"	85PPM	50 Prt	0 Prt	No Limit	0 Pg
"DocOut"	"Windows"	v5.0	"PDF"	"IPDS"	85PPM	50 Prt	1 Prt	No Limit	0 Pg
"DocOut"	"Windows"	v5.0	"IPDS"	-	No Limit	0 Prt	1 Prt	0 Pg	0 Pg
"DocOut"	"Windows"	v5.0	"PDF"	"IPDS"	No Limit	0 Prt	1 Prt	0 Pg	0 Pg
Total				w/o Options		57 Prt	5 Prt	0 Pg	0 Pg

Below the table, a color code message is displayed: "Color code : printers and pages printed are ok **too many printers/pages printed**". At the bottom of the window, there are "Refresh" and "Exit" buttons.

In case of any licenses or Servers indicating an error state (red) please correct accordingly.

5 Firewall configuration

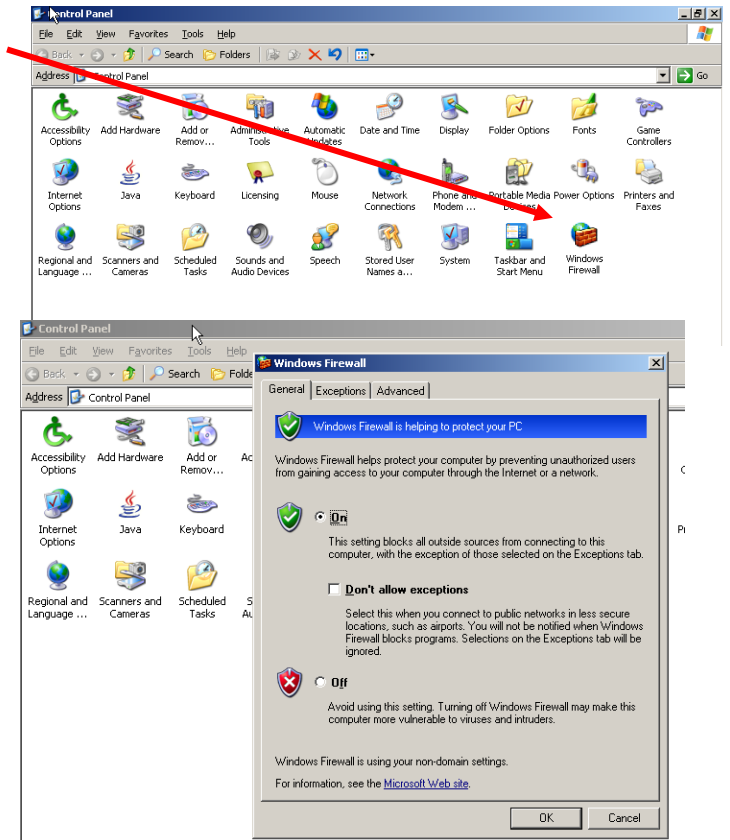
This chapter describes how to prevent the built in Firewall in Windows XP SP2 and Windows 2003 Server SP1/SP2 from blocking the Licensing Server Service to start.

By default the Firewall is enabled when installing SP2 to Windows XP and Windows 2003 server. On both Windows XP and 2003 the firewall should be configured no matter if it's enabled or not. This is to ensure that the MPI Tech related software is working correctly.

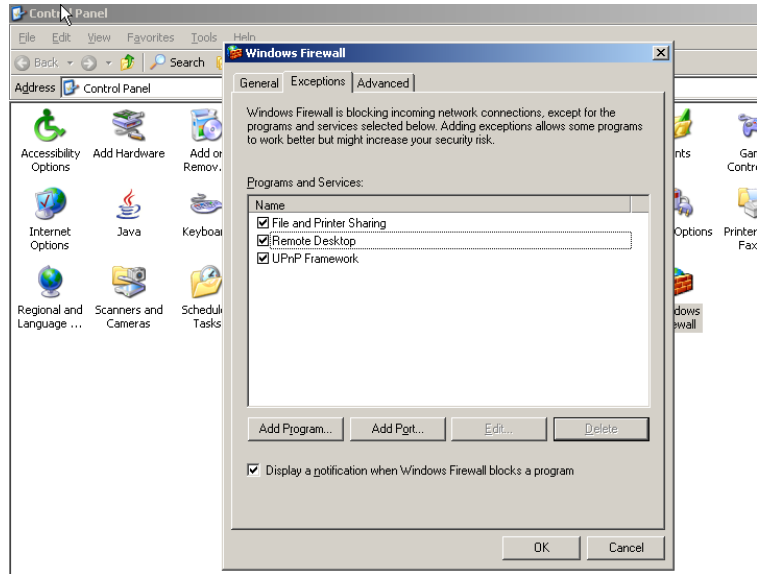
5.1.1 How to setup the firewall.

1. The Firewall is located in the Control Panel and is named Windows Firewall.

Opening the Firewall displays if the firewall is turned on or not, MPI Tech advises to add the MPI Tech related Software, even if the Firewall is turned OFF.



Open the exceptions menu. In this menu you will probably see several exceptions added.



You can add both port numbers and software to the Exceptions, MPI Tech advises to add the *.exe file of the software, then all used ports by the software is added to the exceptions.

This is done using the Add Program wizard.

The files to add are:

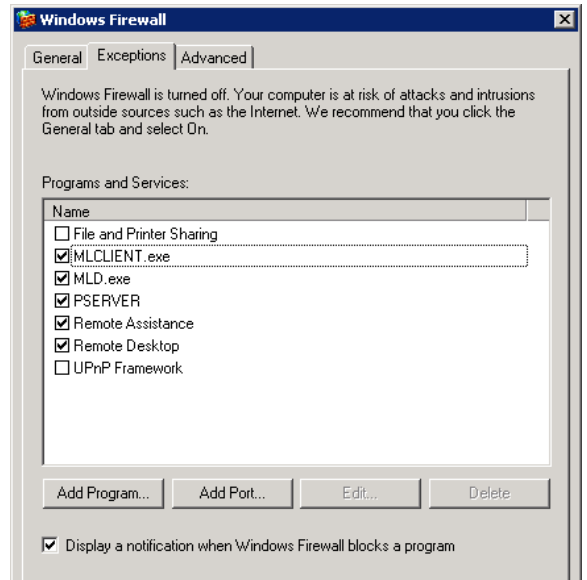
MLClient.exe = Licensing Server Client

MLD.exe = Licensing Server

Pserver.exe = DocOut

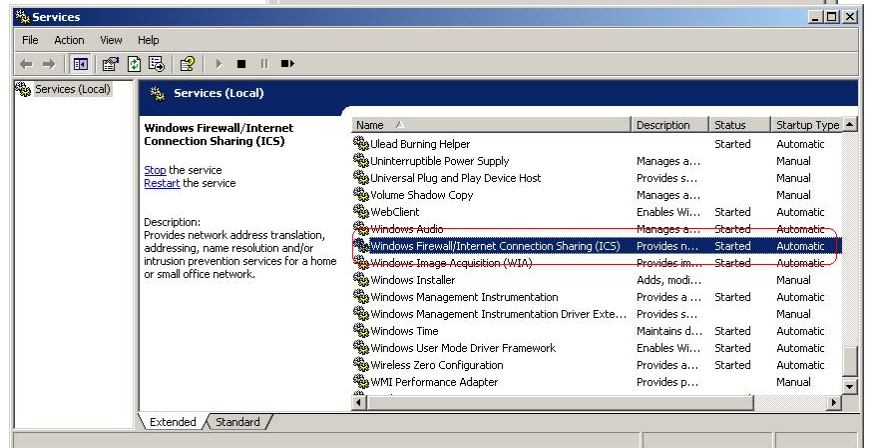
PGuide.exe = PrintGuide

The exe files are located in the folder where the application is installed.



IMPORTANT

Independent of the Firewall configuration (Enabled or Disabled), it is required that the Windows Firewall/ICS Service is 'Started'.



For more information on the Windows Firewall, MPI Tech refers to Microsoft support on: <http://support.microsoft.com> website

This page intentionally left blank

About MPI Tech

MPI Tech, formerly i-data Printing Systems is a global vendor of workflow and output management solutions with distribution worldwide. MPI Tech develops and markets a world-leading portfolio of technologies and products for unique Document Managing and Printing solutions.

With offices located in France, Denmark, Germany, UK and USA, MPI Tech operates in most of the world through sales and support offices and partners. Our partners include Hewlett-Packard, IBM, Ricoh, Xerox, Konica Minolta and Dascom.

More information is available at www.mpitech.com

Trademarks:

Company and product names mentioned in this manual are trademarks or registered trademarks of their respective owners. MPI Tech cannot be held responsible for any technical or typographical errors and reserves the right to make changes to products and documentation without prior notification.