



Part of the Scop Software Suite

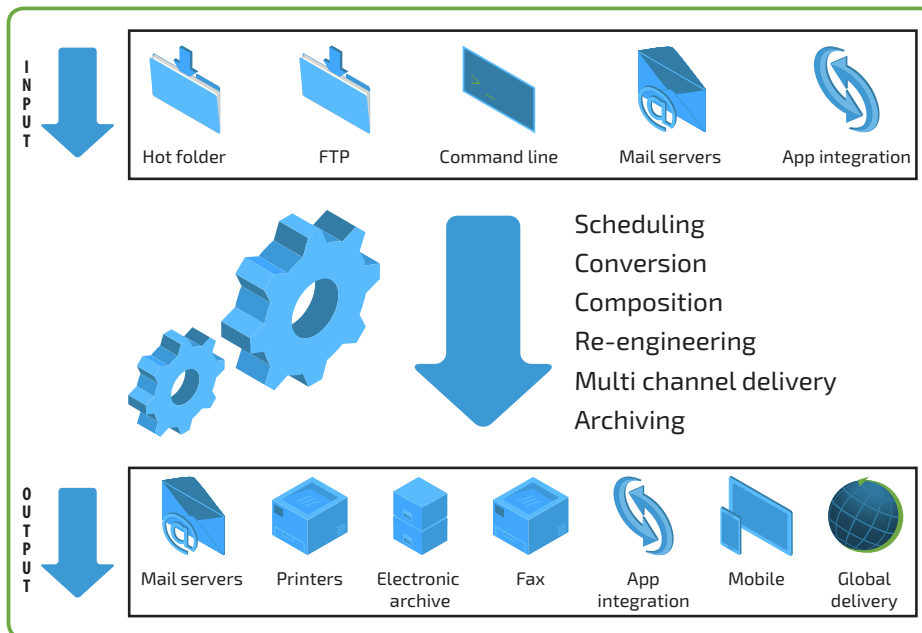
## Control your Input / Output flow process

In today's world data needs to be distributed in so many formats, to multiple clients, and in vertical markets.

It is important to send the format in the preferred method subscribed by the client, which contains relevant personal information, and not just generic content.

Sending them tactile or visual communication is core to the perception of the business, making sure internal branding is monitored and adhered too, is fundamental in delivering client satisfaction and reassurance.

ScopIOM is a powerful and flexible print management tool that enables the complete control and configuration of all print inputs/outputs functions. ScopIOM combines the features of a highly configurable batch engine, a print flow spooler, and a print manager, to deliver a seamless cost saving workflow to your data production line.



With ScopIOM data is acquired and processed with delivery optimised through multichannel outputs all while being supervised, in real time, through an intuitive web interface. The product is designed to be highly configurable and can easily be tailored to match any flow management and interact with any other incumbent solutions. This delivers secure monitoring and flexible administration options, along with controlling brand distribution based on your client's requirements and your company goals.

ScopIOM allows your organisation to have a complete and accurate overview of every aspect of the document process and control how these documents are delivered with traceability at every stage.

### Functions

#### Empower your data

- ✓ Utilises multiple data formats to open up new opportunities
- ✓ Input and process data from any number of inputs (FTP, LPD, email, command line...)

#### Optimize document processes

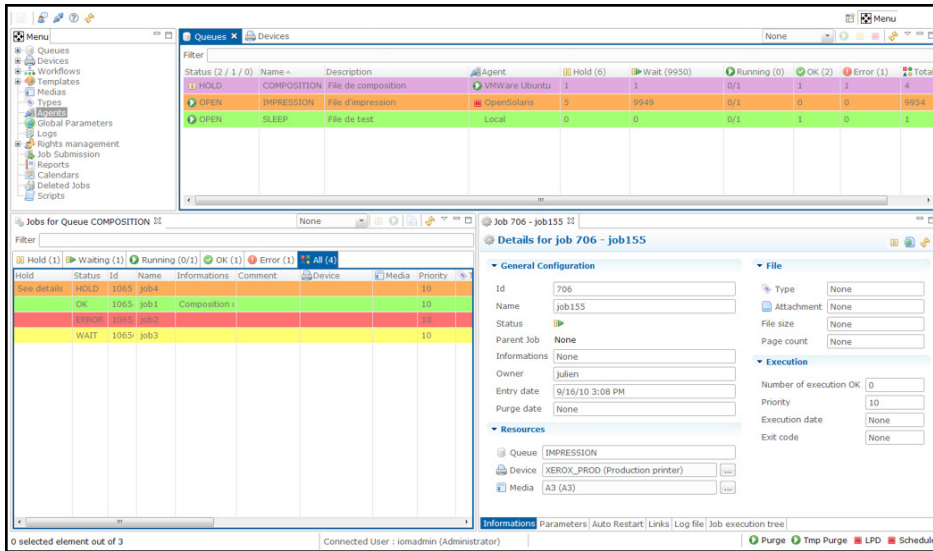
- ✓ With automation of queue management, scheduling, and integration with existing products workflows can be simplified and costs reduced.

#### Multi-Channel Distribution for today and tomorrow

- ✓ Output traditional print or convert for electronic delivery, fax, SMS.... Future proofing your investment.

#### View, Supervise and Control

- ✓ Have a complete overview of all workflows and processes from within a single GUI with real time information displayed.



## Modules

Modular system, offering quantifiable return on investment and growth path

- **Hybrid** - a highly configurable, easy to use and a quickly deployable hybrid mailing solution
- **ScopWorkflow** - quickly create, change and visualise workflows using 'drag & drop' function
- **ScopMaster** - powerful document retrieval solution that helps an organisation manage, route and store electronic documents

## Input/Output

### Diversity of inputs

It is easy to add inputs and data streams to ScopIOM; FTP, email, HTML, command line, Hot Folder, LPD.

### Delivery to where it is needed

ScopIOM includes as standard; print, spool and rights management with infinite configuration to fit into new or existing workflows. ScopIOM supports a plethora of distribution channels including printing, emails, web delivery, faxing, SMS, interaction with ScopMaster or other archiving solution and digital vaults.

### Control

ScopIOM offers complete management of the workflow from start finish with all stages being monitored from a single GUI. These can be managed manually or the processes fully automated on any criteria.

### Supervision

ScopIOM generate a complete audit trail from start to finish with any changes to the document or workflow reported. The reports not only give real time information but allow jobs to be accurately billed to the correct cost centre.



### Workflow Module

The Workflow module allows processes to be dragged, dropped and chained together to create the ideal workflow and allows the operation to be visualised in graphical form.

## Technical specifications

ScopIOM is supported on UNIX, Linux and Windows with JDK 1.6. It does not require a dedicated hardware platform. ScopIOM is accessible via web interface (no workstation installation), command line and web services.

Hardware requirements:

- RAM: 2 GB minimum
- Hard disk space: 1 GB for installation + data storage regarding volume
- CPU: multicores advised.

Operating systems:

- Any system with JDK 1.6.
- Supported database: Oracle (v9 minimum), SQLServer (v2003 minimum), IBM DB 2, MySQL (v5 minimum).

## Our offices

### France

40, rue du Général Malleret Joinville  
BP 88 - 94402 Vitry sur Seine Cedex  
Phone: +33 (0)1 4573 0940  
Fax: +33 (0)1 4680 7071  
E-mail: sales.fr@mpitech.com

### Denmark

Vadstrupvej 35  
DK-2880 Bagsvaerd  
Phone: +45 4436 6000  
E-mail: sales.dk@mpitech.com

### United Kingdom

Anchor House, 50 High Street  
Bagshot GU19 5AW  
Phone: +44 (0)844 800 9803  
Fax: +44 (0)1276 452 379  
E-mail: sales.uk@mpitech.com

### Germany

Bavariastrasse 7a  
D-80336 Muenchen  
Phone: +49 (0)89 35 4762 20  
Fax: +49 (0)89 35 4762 11  
E-mail: sales.de@mpitech.com

### North America - West Coast

4952 Warner Avenue, Suite 301  
Huntington Beach, CA 92649-5506  
Phone: +1 (714) 840 8077  
Fax: +1 (714) 840 2176  
E-mail: sales.us@mpitech.com

### North America - East Coast

2001 Jefferson Davis Highway, Suite 306  
Arlington, VA 22202  
Phone: +1 (703) 418 0680  
Fax: +1 (703) 418 0684  
E-mail: sales.us@mpitech.com



D16406-001 October 2015

Company and product names mentioned in this text are trademarks or registered trademarks of their respective owners. MPI Tech A/S cannot be held responsible for any technical or typographical errors and reserves the right to make changes to products and documentation without prior notification.