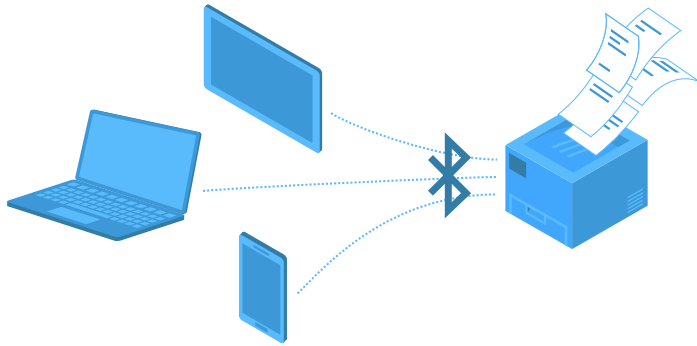


BLUETOOTH PRINTER ADAPTER

Wireless printing in the office and on the go

Freedom and flexibility

Easy access to printing is still a requirement; even in a time where electronic documents are sent, read, shared and saved like never before. The Bluetooth Printer Adapter from MPI Tech provides exactly that freedom and flexibility to your printing.



The Bluetooth Printer Adapter connects via the printer's standard USB port and enables wireless printing of even complex and large documents from Windows laptops, PCs and mobile phones and Android phones and tablets.

The wireless printing solutions from MPI Tech enables flexible placement of equipment and increased user convenience. Additionally, the Bluetooth Printer Adapter provides a cost-effective solution in situations where wired infrastructure is costly or impractical.

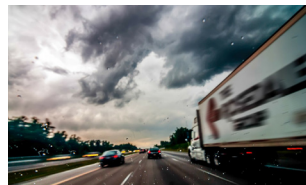
First time a user connects to a printer via the Bluetooth Printer Adapter the devices must be paired, and the printer drivers for the specific printer are downloaded and installed. On Android and Windows phone devices a 3rd party application is required to install printer drivers and handle communication with the printer.



Wireless printing to guests without letting them log on to your LAN. Employees can still print via LAN.



Optimise routines for warehouse personnel by letting them print wirelessly without being next to the printer.



Let staff on the go print any time any where without having to worry about cables and connections.

Key features

- ✓ Add Bluetooth technology to your printers to enable wireless printing
- ✓ Print from mobile devices
- ✓ Prepared for mobile phone, tablet, laptop and other units that communicate via Bluetooth
- ✓ Printer vendor independent solution that works with all printers with a USB port and Plug and Play
- ✓ Windows Plug and Play compatible

Bluetooth Wireless Technology

The Bluetooth Printer Adapter makes printer cables redundant. In order to print without cables, the Bluetooth Printer Adapter makes use of Bluetooth Wireless Technology; a standard that allows a wide range of mobile devices to communicate wirelessly.

Supported Bluetooth Profiles

- Serial Port Profile (SPP)
- Hardcopy Cable Replacement Profile (HCRP)

SPP allows wireless printing from any Windows application to any printer.

HCRP allows wireless printing from any Windows application to any printer.

Furthermore it allows Windows to discover and install printers (Plug and Play) with the Bluetooth Printer Adapter attached.

Range

The Bluetooth Printer Adapter allows you to print within a range of up to 100 meters depending on the construction of the building

Minimum 10 m (33 feet) radius from device in typical use (varies with building construction); in free area it is normally up to 100 m (330 feet).

Frequency Band

2.4 GHz ISM band

Radio Output Power

+20 dBm, Class 1.

Compatibility

The Bluetooth Printer Adapter is compatible with printers with a USB port and Plug'n'Play.

Bluetooth v2.1 + EDR class 1

Printer Interface

One USB ver. 2.0 Full speed.

User Interface

Diagnostic button for information printout. Three light indicators showing data receiving, connection status and power.

Supported Hardware

The Bluetooth Printer Adapter is compatible with printers and MFPs with a USB port and Plug'n'Play.

The Bluetooth Printer Adapter does not control other MFP functions besides print and does not interfere with MFP functions like copy, scan or fax or printing via LAN.

Cable options between BPA and Printer

The BPA is intended to be connected to the Printer using a standard USB A <-> USB B cable.

If the intended printer does not have a USB connector but instead has a parallel/Centronics interface, then it might still be possible to use this printer with BPA.

This however requires a special USB A <-> Parallel/Centronics adapter cable.

Tests with different cable models have so far shown that adapter cables from the vendor ATEN works with BPA.

Contact support@mpitech.com with questions about adapter cables.

Supported devices

The Bluetooth Printer Adapter has been tested and works with laptop and stationery Windows PCs with Bluetooth. Bluetooth Printer Adapter can connect with Windows XP, Windows 7, Windows 8.x and Windows 10 devices.

On Android phones and tablets and Windows phones a 3rd party application is required in order to print.

The Bluetooth Printer Adapter is not able to communicate with the Bluetooth profile on iOS devices

The Bluetooth Printer Adapter currently does not work with Chromebooks.

Regulatory information

Safety

Humidity: 10% to 95% RH, non-condensing.

Temperature range: -10 to +40 °C

Environmental

- RoHS compliant
- EMC compliant
- UL approved
- CE approved

Electrical Requirements

5 VDC (650mA @5V)

External power supply included (EU/International, US, UK and Australian versions are available).

Warranty

1 year manufacturing fault warranty.

3 months software warranty.

Size and weight

116 x 74 x 25mm / 4.6 x 2.9 x 1"

Weight: 75g / 2.6oz / 0.2lb

Our offices

France

40, rue du Général Malleret Joinville
BP 88 - 94402 Vitry sur Seine Cedex
Phone: +33 (0)1 4573 0940
Fax: +33 (0)1 4680 7071
E-mail: sales.fr@mpitech.com

Denmark

Vadstrupvej 35
DK-2880 Bagsvaerd
Phone: +45 4436 6000
E-mail: sales.dk@mpitech.com

United Kingdom

Anchor House, 50 High Street
Bagshot GU19 5AW
Phone: +44 (0)844 800 9803
Fax: +44 (0)1276 452 379
E-mail: sales.uk@mpitech.com

Germany

Bavariastrasse 7a
D-80336 Muenchen
Phone: +49 (0)89 35 4762 20
Fax: +49 (0)89 35 4762 11
E-mail: sales.de@mpitech.com

North America - West Coast

4952 Warner Avenue, Suite 301
Huntington Beach, CA 92649-5506
Phone: +1 (714) 840 8077
Fax: +1 (714) 840 2176
E-mail: sales.us@mpitech.com

North America - East Coast

2001 Jefferson Davis Highway, Suite 306
Arlington, VA 22202
Phone: +1 (703) 418 0680
Fax: +1 (703) 418 0684
E-mail: sales.us@mpitech.com



D16114-011 September 2016

Company and product names mentioned in this text are trademarks or registered trademarks of their respective owners. MPI Tech A/S cannot be held responsible for any technical or typographical errors and reserves the right to make changes to products and documentation without prior notification.