



Quick Guide

DocOut® V7

English

10598-01

MPI Tech is a global vendor of workflow and output management solutions with distribution worldwide. MPI Tech develops and markets a world-leading portfolio of technologies and products for unique Document Management and Printing solutions.

MPI Tech operates in most of the world through sales and support offices and partners.

This page is intentionally left blank

Introduction:

This document describes the general procedure to initialize DocOut and getting started to use the software. It is assumed that the DocOut software is obtained either via a CD ROM or downloaded from the MPI Tech web.

Please note the below procedure describes one way to get DocOut running with a single printer. Other means of connections than the below described are also possible. For a more advanced and detailed setup description and features please refer to the DocOut manual and the on-line help via PrintGuide.

Pre-requisites:

DocOut V7

PrintGuide

Windows™ 2000/XP/2003/2008/7 Server system.

Host System zSeries or iSeries

MPI Tech Manuals:

- 'Host Print Setup Guide'
- 'DocOut for Windows Installation and Operator's Guide'

Products involved:

DocOut V7

PrintGuide

Windows™ 2000/XP/2003/7/2008 Server system

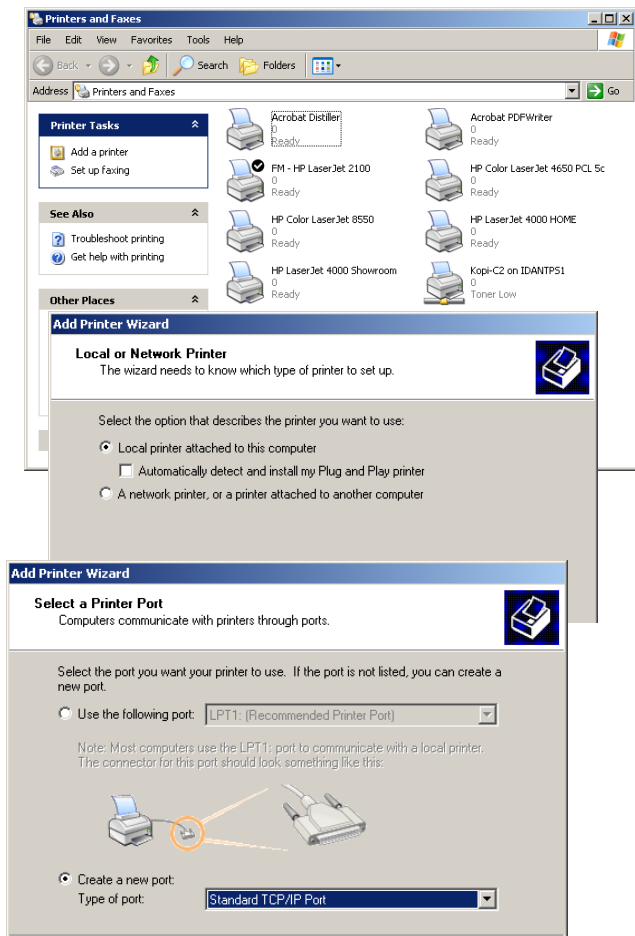
This page is intentionally left blank

Create a Windows spool

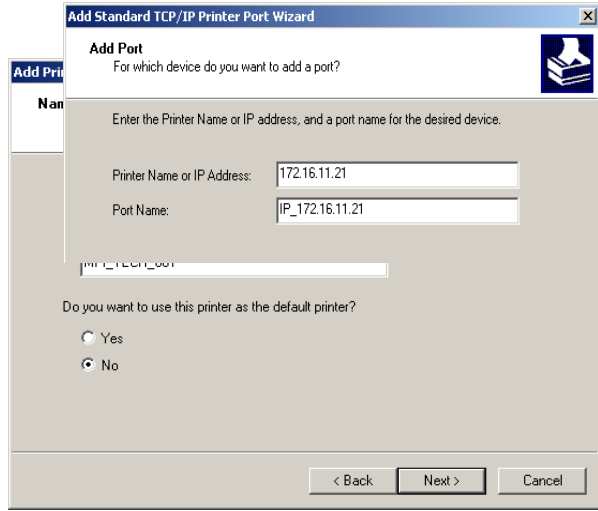
A windows spool must be defined prior to installing DocOut. The spool must be created on the same system as where DocOut is installed.

A typical way of defining a Windows spool is the following:
The below procedure is from Windows XP. Other Windows platforms may be slightly different.

3. Ensure the target printer is 'ON' – 'Ready', and installed with a network card and defined with an IP address.
4. Ensure a successful 'Ping' to the printer from the Windows Server system
5. Open 'Start' and locate the 'Printers' folder
6. Select 'Add Printer'
7. Select: 'Local Printer attached...'
8. Select: Create a new port and find 'Standard TCP/IP port'
9. Type in the IP address of the target printer
10. Select the appropriate driver for the actual printer and hit 'Next'



11. Rename the created printer to match the naming standard in your network
12. Perform a test print to verify successful creation of the spool for the target printer
13. Modify the driver parameters to match the options installed in the printer (if required)

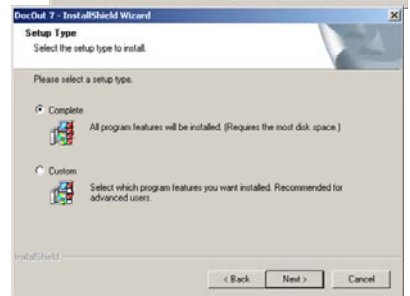
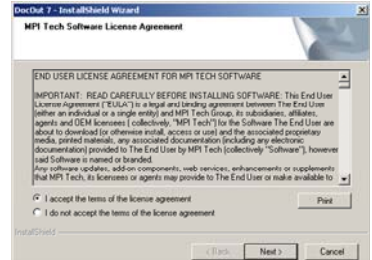


Install DocOut

A windows spool must be defined prior to installing DocOut.

DocOut is supplied on a CD ROM or can be downloaded from www.mpitech.com:

- Select either 'Install DocOut' from the menu or follow the below procedure:
- Locate the folder of the 'Setup.exe'
- Run 'Setup.exe' and follow the instructions
- Select 'Custom' for selecting the folder for the program files. 'Complete' will select default folder.
- Select 'Start DocOut Service' and select 'Finish'



Install PrintGuide

PrintGuide is required to manage and configure DocOut

PrintGuide is supplied along with DocOut on a CD ROM or can be downloaded from www.mpitech.com

PrintGuide can be installed on any Windows PC in your network and is able to browse and configure various MPI Tech software and hardware products connected to your network.



- Locate the library of the 'Setup.exe'
- Run 'Setup.exe' and follow the instructions
- Observe the installation
- Select 'Finish'

Start PrintGuide.

PrintGuide will scan and locate any MPI Tech DocOut, LinkCom and EasyCom products.

More information may be found in this document:
'D60364 Getting started with PrintGuide'

Note:

When installing DocOut or PrintGuide under Windows XP or Server 2003/2008 please ensure the below points:

- Windows Firewall / (ICS) service must be running
(Required for DocOut)
- If Firewall is enabled you must ensure that DocOut (Pserver.exe) and PrintGuide (printguide.exe) are listed in the list of 'Programs and Services' in the 'Exceptions' list for the Firewall options.

Further and detailed information can be found in the below document:

'How to configure Windows XP and Windows 2003 firewall running MPI Tech software Solution.pdf'

Define logical Printer in DocOut

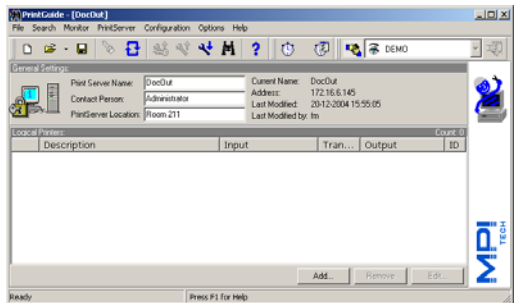
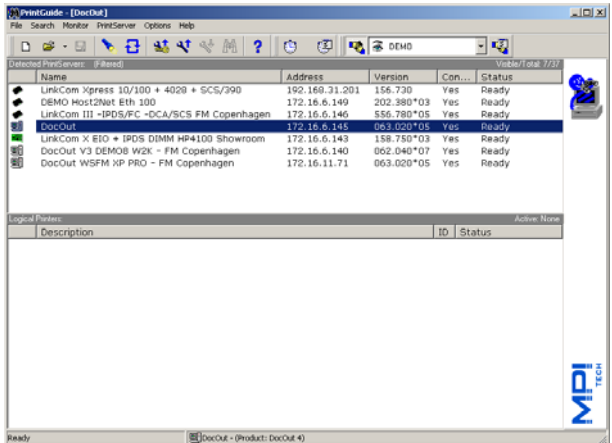
PrintGuide is required to manage and configure DocOut

When first installed there are no logical printers defined. A Printer Wizard will enable easy definition of the required printer type.

Any number of logical printers may be defined in DocOut. However, please note that the very first installation (initial test version) allows up to 2 (two) logical printer sessions of each type with a performance of up to 55 ppm.

Evaluation and production versions can be licensed to exactly match your requirements

- Start PrintGuide (PrintGuide will browse the network and display all installations of DocOut)
- Locate and select the actual DocOut installation. Double click on the highlighted DocOut to view the logical printer window.
- To add a logical printer click 'Add' in the lower right corner of the window



- **IMPORTANT:** Select the appropriate type of session from the host system (in this case an IPDS session using TCP/IP from IBM PSF)



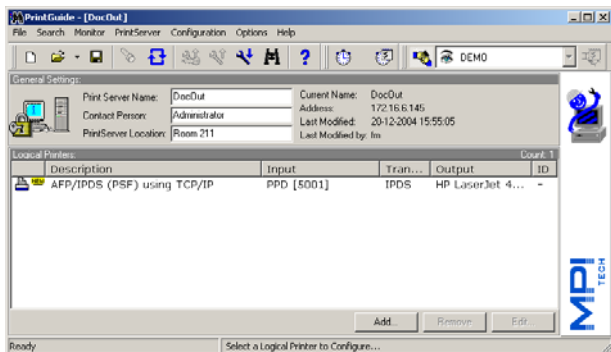
- Select the options required

- Select a unique port No. PrintGuide will always suggest a valid and free number

- From the drop-down list select a printer template that matches the actual printer and select the windows spool for the actual printer as defined previously under 'Create a Windows spool'.

- Select 'Finish' for ending the definition.

- Save the definition via: 'PrintServer' – 'Save Configuration' – 'OK'



- Changes to the saved definition can be performed by re-entering the logical session.

Support

For technical support, please direct all information to:

Denmark

Phone: +45 4436 6000

E-mail: support.dk@mpitech.com

France

Phone: +33 (0) 1 4573 0940

E-mail: support.fr@mpitech.com

North America (East coast)

Phone: +1 (703) 418 0680

E-mail: support.us@mpitech.com

North America (West coast)

Phone: +1 (714) 840 8077

E-mail: support.us@mpitech.com

United Kingdom

Phone: +44 (0) 844 800 9803

E-mail: support.uk@mpitech.com

Germany

Phone: +49 (0) 89 35 4762 - 30

E-mail: support.de@mpitech.com

NOTE:

Company and product names mentioned in this guide are trademarks or registered trademarks of their respective owners.

MPI Tech A/S

Vadstrupvej 35
DK-2880 Bagsvaerd
Denmark

Phone: +45 4436 6000 - Fax: +45 4436 6111

www.mpitech.com